

Beyond Licensing? Library Consortia in the Digital Age

Symposium on the occasion of the 10th anniversary of the Consortium of Swiss Academic Libraries, Zurich, december 6, 2010

Introducing the Consortium of Swiss Academic Libraries

Dr. Wolfram Neubauer, ETH-Bibliothek

THE LANDSCAPE

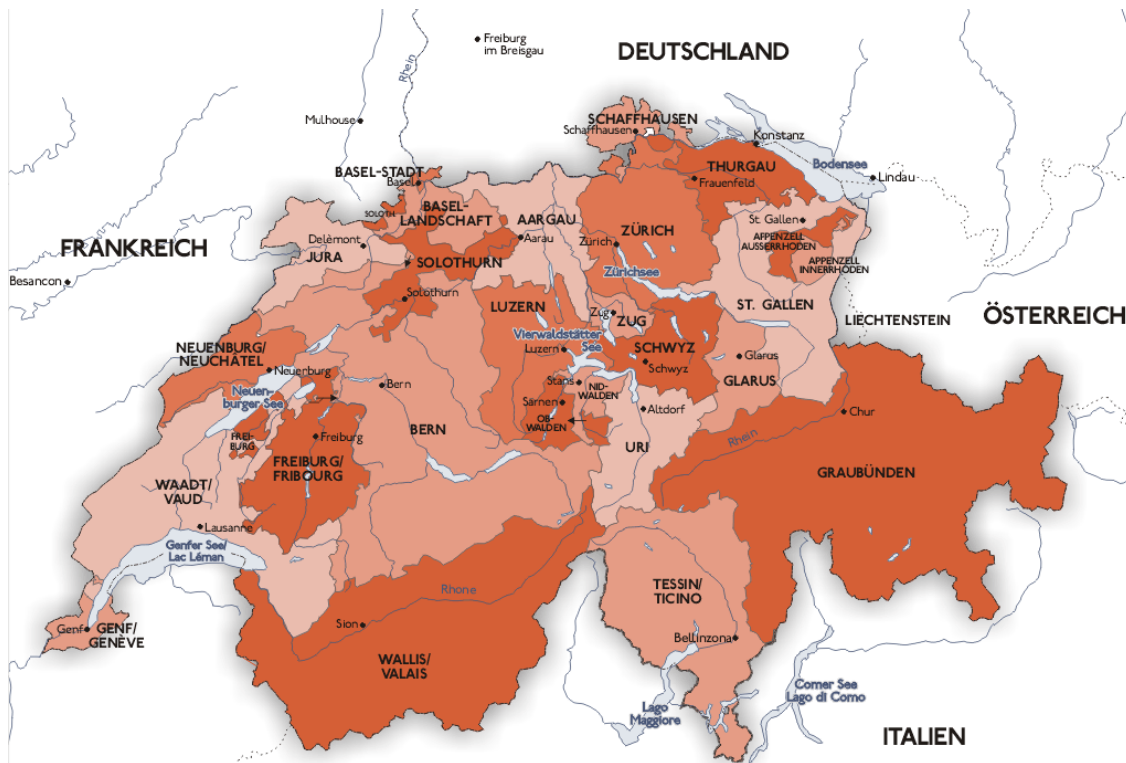
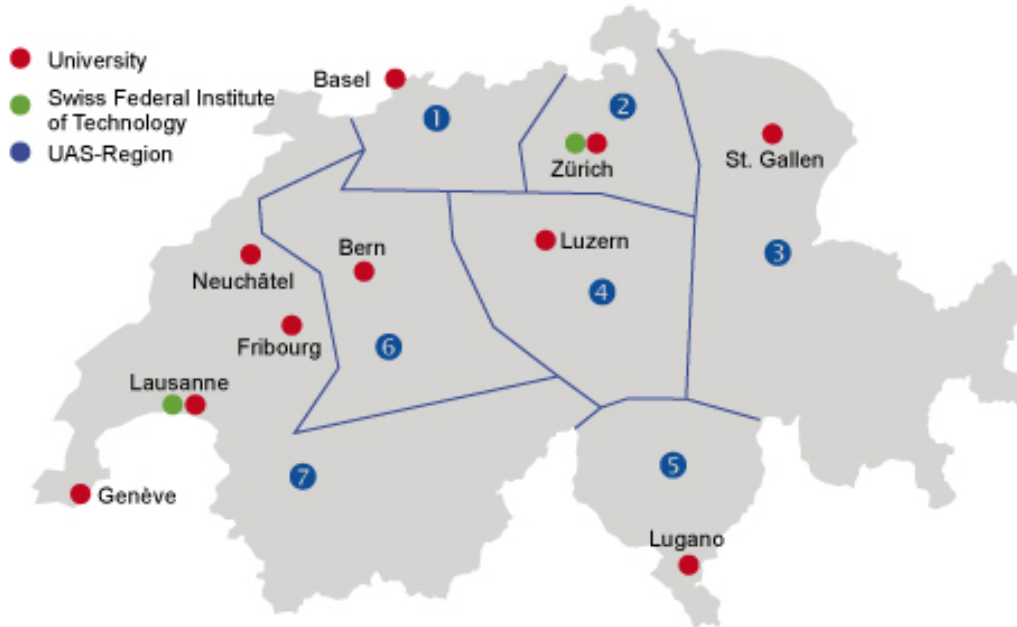


Image source: Wikipedia.org

- Switzerland lies in the heart of Europe
- 7.4 million people
- 26 cantons
- 4 official languages
 - ✓ German (64%)
 - ✓ French (20,4%)
 - ✓ Italian (6,5%)
 - ✓ Rhaeto-Romanic (1%)

- Official Higher Education Institutions
 - ✓ 10 Cantonal Universities
 - German- and French-speaking, one Italian-speaking
 - ✓ 2 Federal Institutes of Technology
 - ETH Zürich (ETHZ) - Swiss Federal Institute of Technology Zurich
 - Ecole Polytechnique Fédérale de Lausanne (EPFL) - Swiss Federal Institute of Technology Lausanne
 - ✓ 7 Universities of Applied Sciences
 - ✓ Universities of Teacher Education

HIGHER EDUCATION IN SWITZERLAND (II)



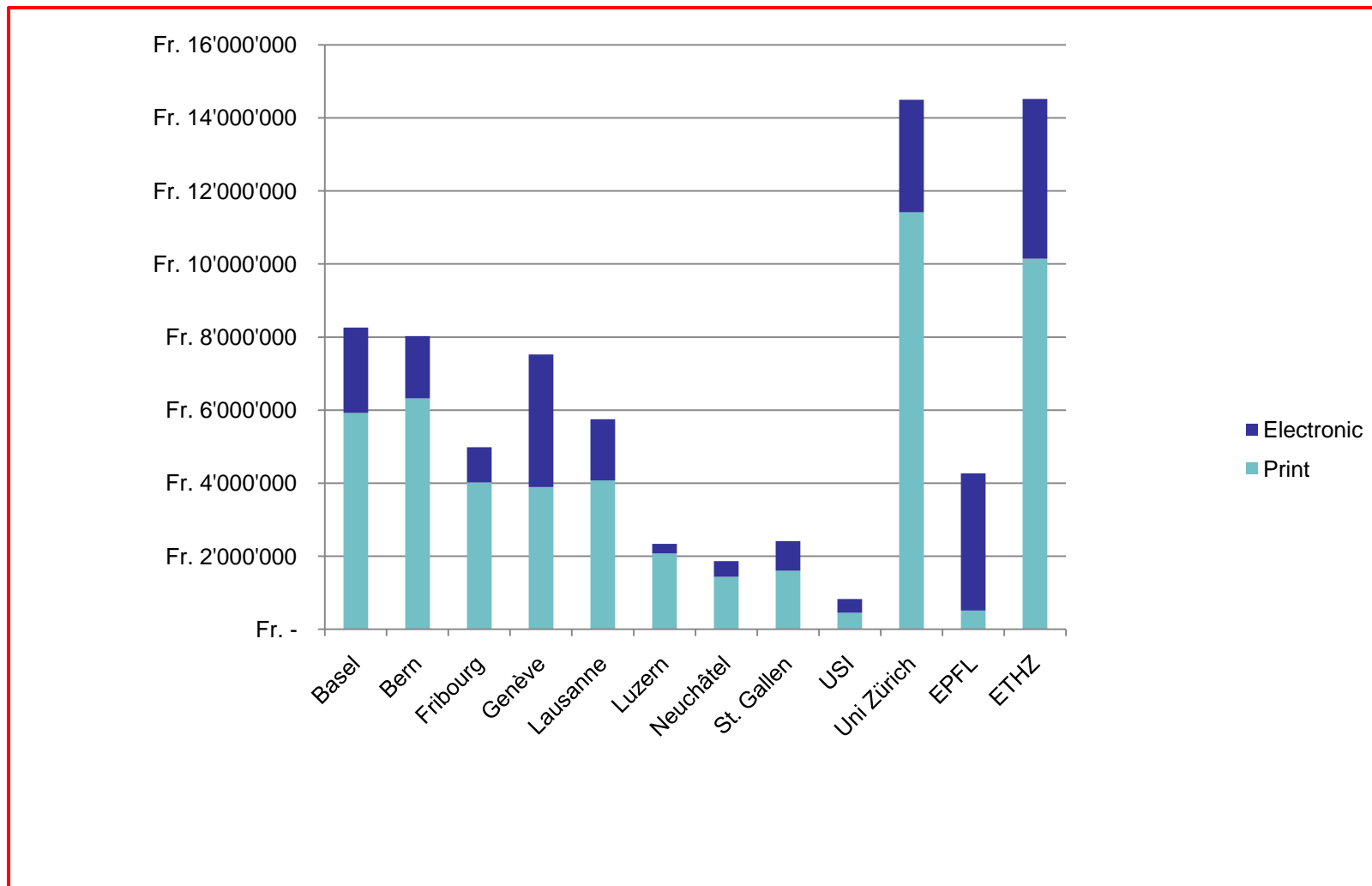
UAS-Regions:

- 1) Fachhochschule Nordwestschweiz
- 2) Fachhochschule Zürich
- 3) Fachhochschule Ostschweiz
- 4) Fachhochschule Zentralschweiz
- 5) Scuola Universitaria Professionale della Svizzera Italiana
- 6) Fachhochschule Bern
- 7) Haute école spécialisée de Suisse occidentale

Image source: SBF Staatssekretariat für Bildung und Forschung / State Secretary for Education and Research SER



SWISS UNIVERSITY LIBRARIES 2009: ACQUISITIONS BUDGETS



Source: Library Statistics 2009 of the Swiss Federal Statistical Office: <http://www.bfs.admin.ch/bfs/portal/de/index/themen/16/02/02/data.html>

HISTORY OF THE CONSORTIUM (I)

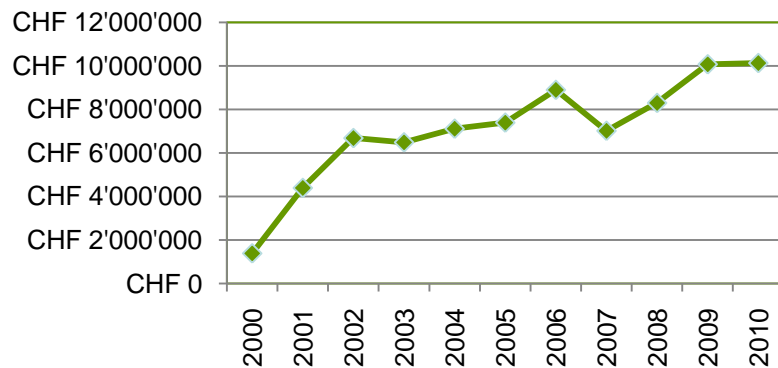
- before the year 2000
 - ✓ consortium within the ETH domain on a smaller basis
- since the year 2000
 - ✓ supported by Conference of Swiss University Libraries (KUB/CBU)
- from 2000-2005 national project
 - ✓ start-up financing of Swiss Confederation
 - ✓ promotion of product acquisition by Swiss University Conference (SUK/CUS) with 14 mio. CHF
 - ✓ the member libraries pay a 50% portion of the fees

HISTORY OF THE CONSORTIUM (II)

- 2006-2012 continuation of the consortium
 - ✓ 100% financed by the members
 - central office with 3.25 FTE
 - acquisition of licenses
 - 2000-2010: about 80 mio. CHF
 - 2010: about 10 mio. CHF
- starting from the year 2013(?)
 - ✓ national project with a 50% support by the Swiss Confederation

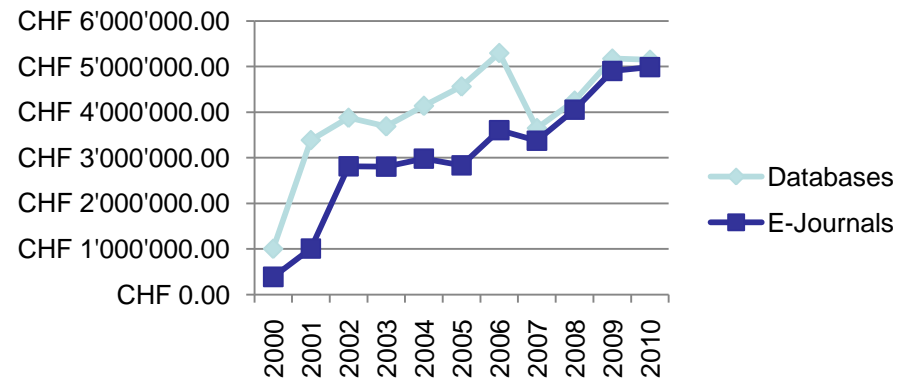
EXPENDITURE LICENSES 2000-2010

Total expenditure licenses 2000-2010



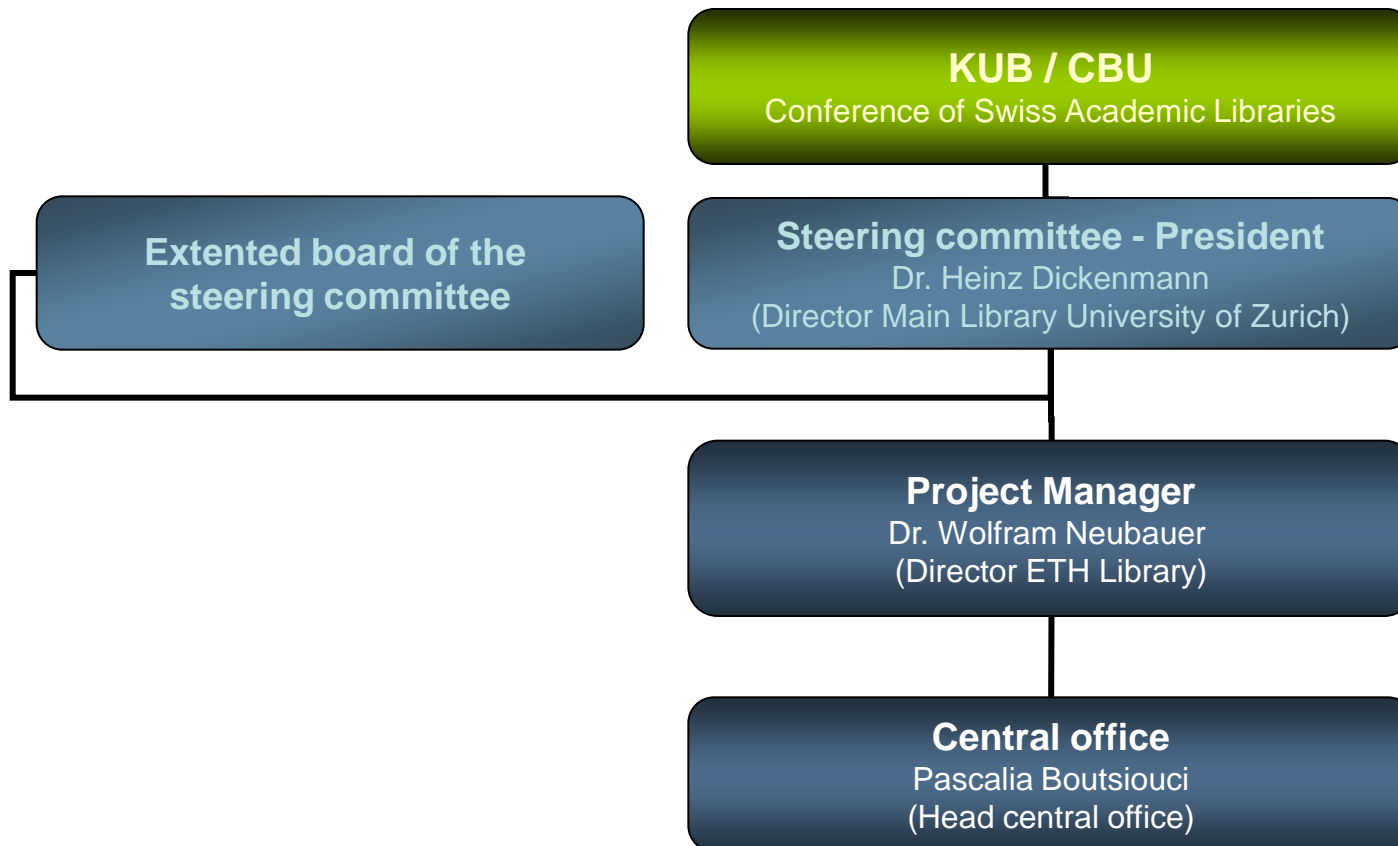
- 2000-2010: about 80 mio. CHF
- 2010: about 10 mio. CHF

Total expenditure databases & e-journals 2000-2010

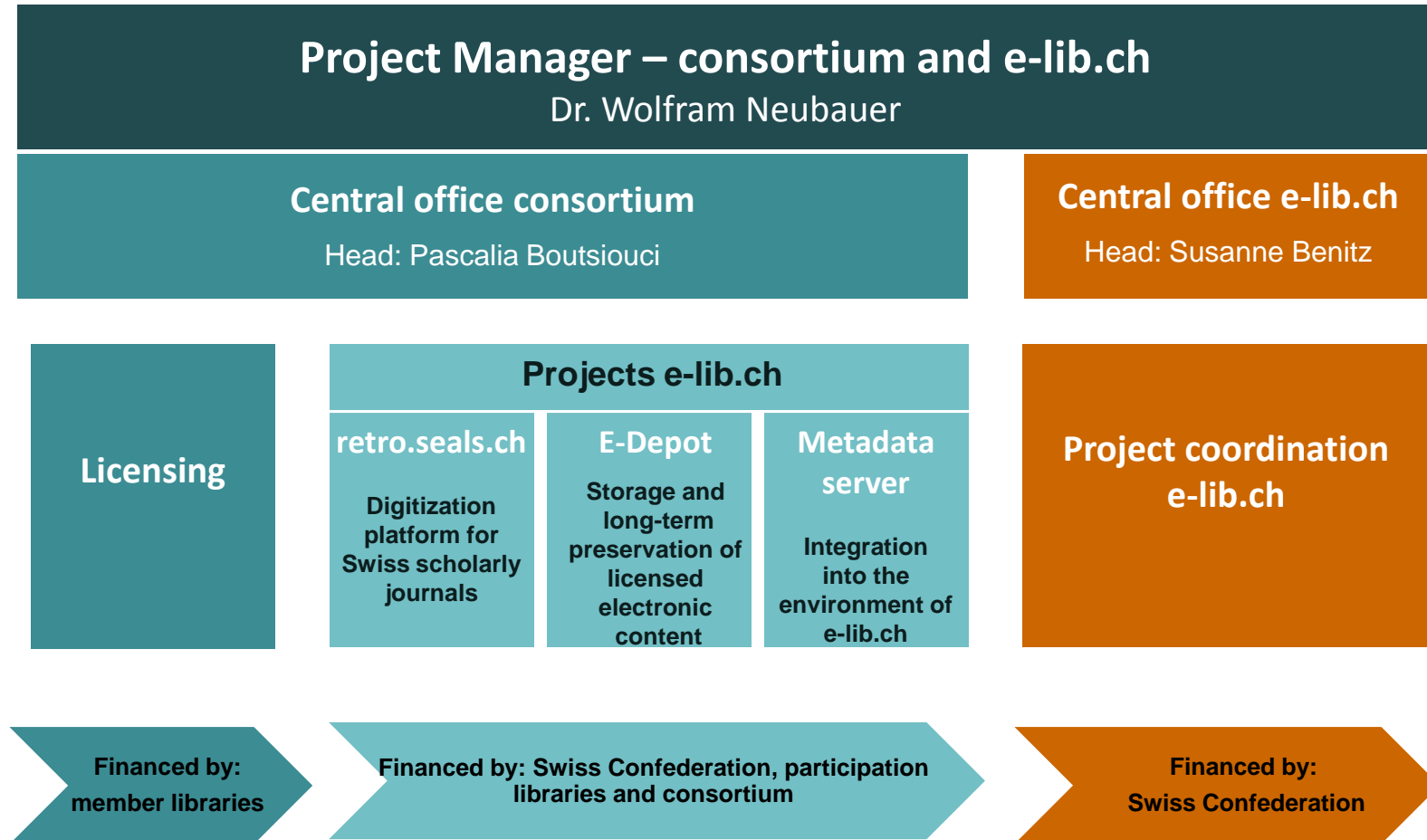


ORGANIZATIONAL STRUCTURE

- the central office is located at ETH Library in Zurich



➤ Organisational structure of the consortium at ETH Library



WEB ADDRESS <http://lib.consortium.ch>

Weinbergstrasse 74, Zurich

Consortium of
Coordinated
Swiss universities

> Licenses

The Consortium licenses
electronic journals
participation are libraries
commercial institutions

2009 - 2011

 CBU KL

© Konsortium der

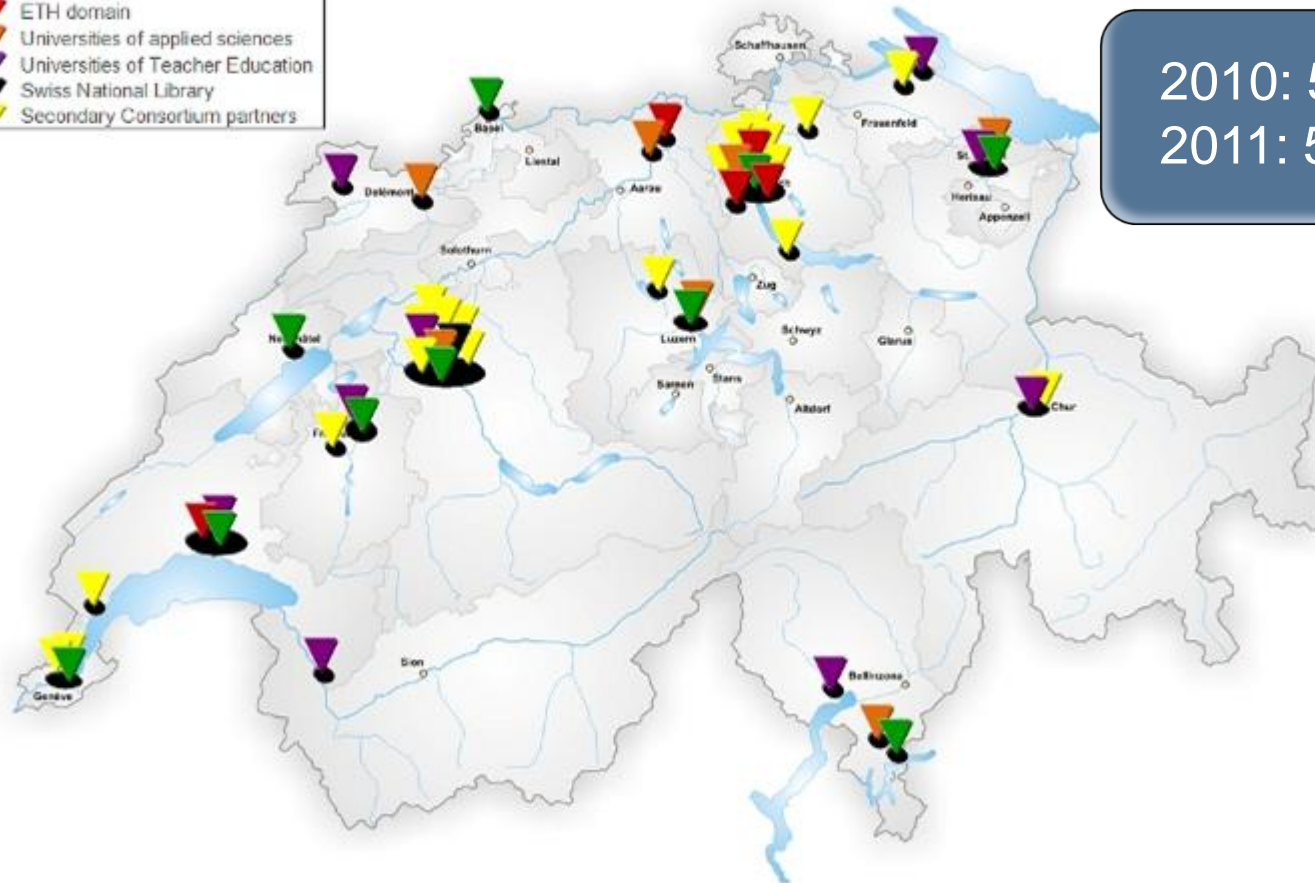


MEMBERS OF THE CONSORTIUM

Addresses of all primary consortium partner libraries, with contact details.

Addresses of all secondary consortium partners, with contact details.

- ▼ Cantonal Universities
- ▼ ETH domain
- ▼ Universities of applied sciences
- ▼ Universities of Teacher Education
- ▼ Swiss National Library
- ▼ Secondary Consortium partners



2010: 50 libraries
2011: 53 libraries

10 Cantonal Universities

- ✓ Universität Basel
- ✓ Universität Bern
- ✓ Université de Fribourg
- ✓ Université de Genève
- ✓ Université de Lausanne
- ✓ Università della Svizzera Italiana
- ✓ Universität Luzern
- ✓ Université de Neuchâtel
- ✓ Universität St. Gallen
- ✓ Universität Zürich

- Domain of the Federal Institutes of Technology
 - ✓ EPF Lausanne
 - ✓ ETH Zürich
 - ✓ Four subordinate research facilities (Lib4RI)
 - Paul Scherrer Institute PSI
 - Swiss Federal Institute for Forest, Snow and Landscape Research WSL
 - Swiss Institute for Materials Science and Technology EMPA
 - Swiss Federal Institute of Aquatic Research and Technology EAWAG

PRIMARY CONSORTIUM PARTNER LIBRARIES (III)

- Swiss National Library
- 7 Universities of Applied Sciences
 - ✓ Berner Fachhochschule
 - ✓ Fachhochschule Nordwestschweiz
 - ✓ Fachhochschule Ostschweiz
 - ✓ Fachhochschule Zentralschweiz
 - ✓ Haute Ecole Spécialisée de Suisse Occidentale
 - ✓ Scuola Universitaria Professionale della Svizzera Italiana
 - ✓ Zürcher Fachhochschule

➤ 8 Universities of Teacher Education

- ✓ HEP BEJUNE (Berne, Jura, Neuchâtel)
- ✓ HEP Fribourg
- ✓ HEP Valais
- ✓ HEP Vaud
- ✓ PH Bern
- ✓ PH des Kantons St. Gallen
- ✓ PH Graubünden
- ✓ PH Thurgau

OTHER CONSORTIUM PARTNER LIBRARIES (I)

➤ Other Institutions (20 libraries)

- ✓ Agricultural Research Stations ACW/ALP/ART
- ✓ Federal Facilities
 - Federal Office of Public Health (FOPH)
 - Swiss Federal Office of Meteorology and Climatology (MeteoSwiss)
 - Swiss National Museum
 - Swiss National Science Foundation
 - State Secretariat for Economic Affairs (SECO)
- ✓ Health Education Centres
 - Bildungszentrum für Gesundheit Kanton Thurgau (BfG)
 - Bildungszentrum Gesundheit und Soziales (BGS) Chur
 - Bildungszentrum Gesundheit Basel Stadt (BGSBS)
 - Medi; Zentrum für medizinische Bildung Bern
 - Berner Bildungszentrum Pflege (BZ Pflege)
 - Zentrum für Ausbildung im Gesundheitswesen Kanton Zürich (ZAG)

OTHER CONSORTIUM PARTNER LIBRARIES (II)

- CERN Library
- Kaleidos Fachhochschule
- Medicines for Malaria Venture (MMV)
- Swiss Federal Institute for Vocational Education and Training (SFIVET/EHB)
- Swiss Institute for Art Research (SIK-ISEA)
- Swiss National Bank
- Swiss Ornithological Institute

Thank you very much!

<http://lib.consortium.ch/index.php>